

N4529D

United States of America
Department of Transportation — Federal Aviation Administration
Supplemental Type Certificate

Number **SA4325NM**

This certificate, issued to Aviation Development Corporation

certifies that the change in the type design for the following product with the limitations and conditions therefor as specified hereon meets the airworthiness requirements of Part 23 of the Federal Air Regulations, effective February 1, 1965

THIS S.T.C. LIMITED TO

Original Product — Type Certificate Number: A16EA Aircraft Model AA5B
Make: Grumman Aerospace Registration No. N4529D
Model: AA-5, AA-5A, AA-5B Serial No. AA5B-1145

Description of Type Design Change: Installation of modification to the engine cowl nose bowl which splits the nose bowl horizontally, allowing it to be removed without prop removal. This modification is in accordance with Aviation Development Corporation Drawing List DL-002-2NB.

Limitations and Conditions: Approval of this change in type design applies to the above model aircraft only. This approval should not be extended to aircraft of this model on which other previously approved modifications are incorporated unless it is determined that the relationship between this change and any of those other previously approved modifications, including changes in type design, will introduce no adverse effect upon the airworthiness of that aircraft. A copy of this Certificate must be maintained as part of the permanent records for the modified aircraft.

This certificate and the supporting data which is the basis for approval shall remain in effect until surrendered, suspended, revoked, or a termination date is otherwise established by the Administrator of the Federal Aviation Administration.

Date of application: February 22,

Date issued:

Date of issuance: May 20, 1988

Date amended:



By direction of the Administrator
D. L. Reagin
(Signature)
Assistant Manager, Seattle
Aircraft Certification Office
(Title)

Any alteration of this certificate is punishable by a fine of not exceeding \$1,000, or imprisonment not exceeding 3 years, or both.

This certificate may be transferred in accordance with FAR 21.47.

N4529D

Report No: I 001-2NB

Date: 02/23/88

Page: 1

Aviation Development Corporation
1305 NW 200th Street
Seattle, Washington 98177

Instructions for modification and assembly of nose-bowl
for Grumman AA-5A and AA-5B models.

1. Remove spinner and prop.
2. Mark nose-bowl even with upper edge of lower engine cowl.
3. Remove nose-bowl and cut along mark, using fine toothed thin bladed saw.
4. After cutting, file off imperfections. Use rotary file to remove excess build-up of fiberglass on inside of nose-bowl, so surface is flat and even before attaching splice plates.
5. Form left and right splice plates (P/N P1001-1 and P1002-1) to fit.
6. Transfer hole patterns from all plate drawings to nose-bowl, using horizontal cut as center line.
7. Clamp splice plates in place to lower half of nose-bowl and drill 3/32 pilot holes and hold plates in place with clecos. Install upper half of nose-bow and follow same procedure.
8. Remove splice plates and enlarge upper row of holes to #40 drill and install nut plates. Refit plates to lower half and drill holes to 5/32" and countersink on outside to fit dimples in washers, rivet plates in place. Countersink holes in upper half to fit washers. Assemble nose-bowl halves and check for proper fit.
9. Have correct log book entries made by your A&P mechanic and form 337 completed by an I.A.

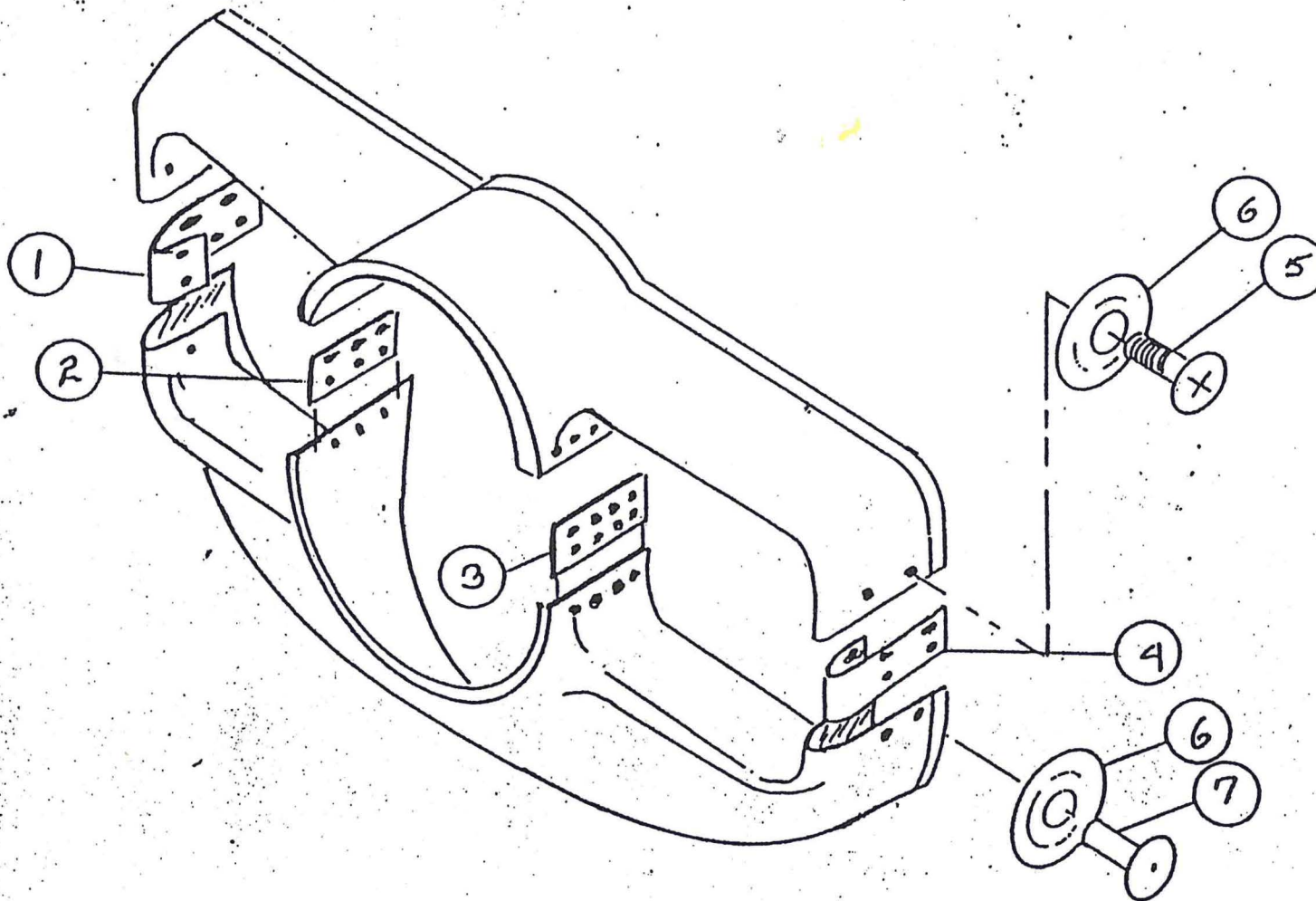
Part No	PC. No.	Name	No. Req.	Material	Notes
P1002-1	1	Right O.S. Plate	1	Alum.	Dr P1002
P1002-2	2	Right cent. Plate	1	Alum.	Dr P1002
P1001-2	3	Left cent. Plate	1	Alum.	Dr. P1001
P1001-1	4	Left O.S. Plate	1	Alum.	Dr. P1001
MS24694-56	5	Machine Screw	14	St/Less Steel	
A3235SS020-27A6	6	Countersunk Washer	28	St/Less Steel	
AY426AD-6-6	7	Rivet	14	Alum.	
		<i>NUT PLATES</i>	<i>14</i>		

AVIATION DEVELOPMENT CORP.
1305 NW 200th Seattle, Wa. 98177

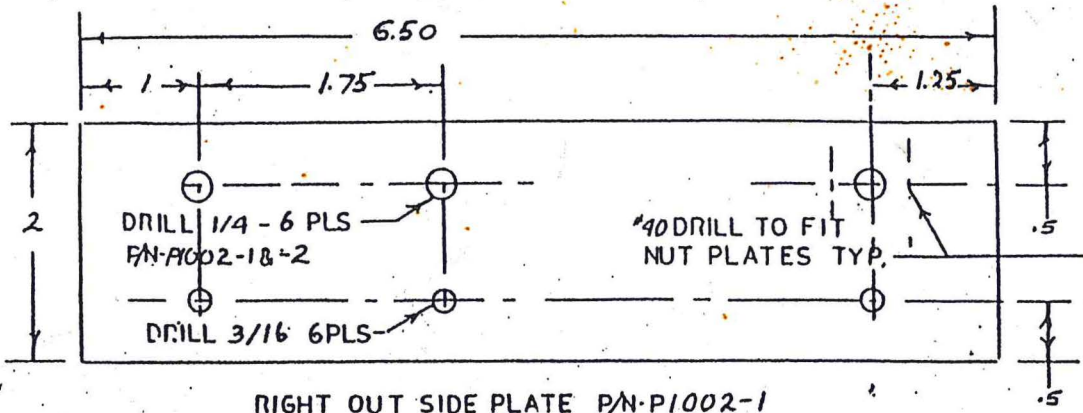
Parts List for Nose Bowl Mod for Grumman AA5 Series

Date 12/19/86

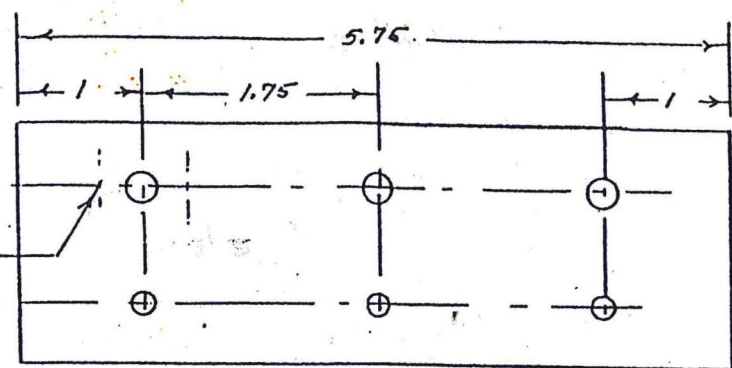
Drawing No. A1001
Sheet 2 of 2



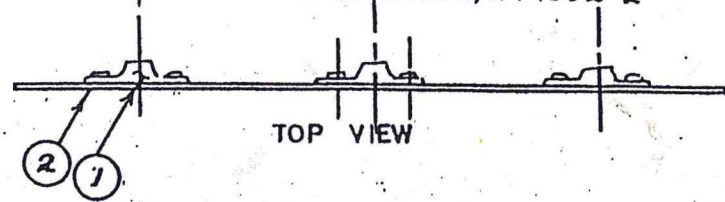
AVIATION DEVELOPMENT CORP. 1305 NW 200th Seattle Wa 98177		
SCALE: NONE	APPROVED BY: <i>Joe Brewer</i>	DRAWN BY GTN
DATE: 12/19/86		REVISED
NOSE BOWL MOD FOR GRUMMAN A5SERIES ASSEMBLY		
		DRAWING NUMBER A1001 SHEET 1 OF 2



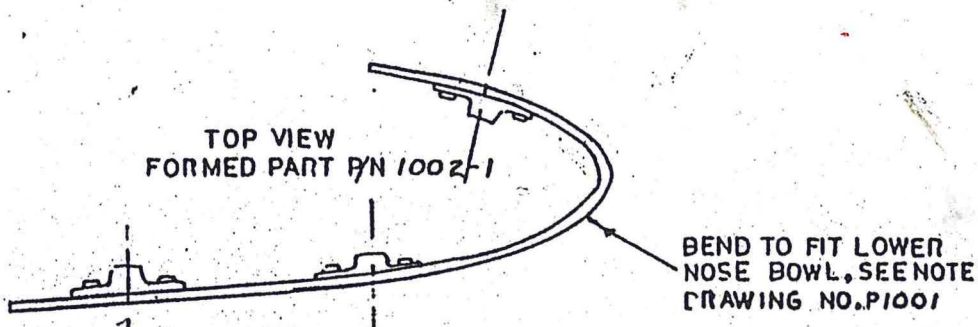
RIGHT OUT SIDE PLATE P/N-P1002-1



RIGHT CENTER PLATE P/N P1002-2



TOP VIEW

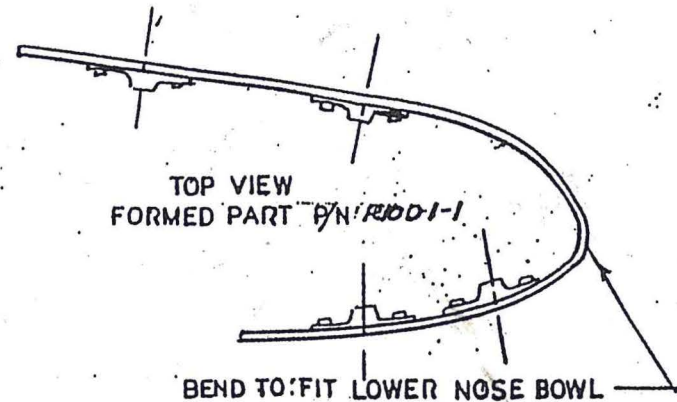
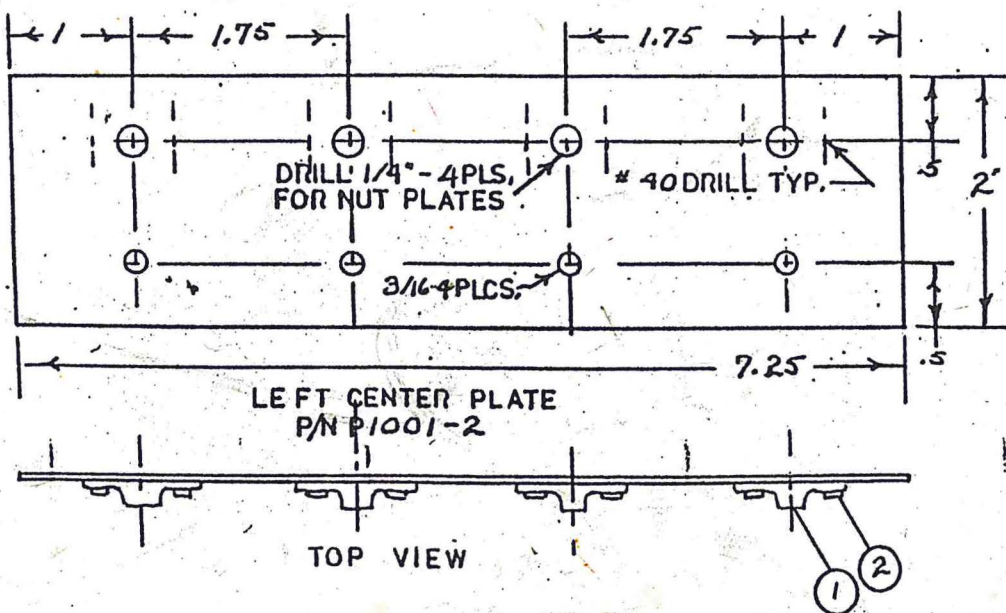
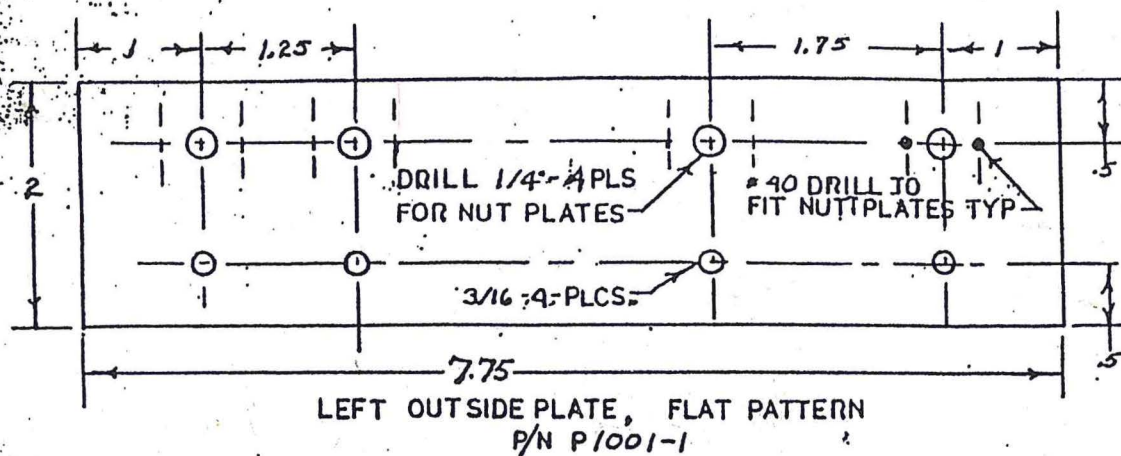


TOP VIEW FORMED PART P/N 1002-1

BEND TO FIT LOWER NOSE BOWL, SEE NOTE DRAWING NO. P1001

PART'S LIST					
PART No.	PL. No.	NAME	NO. REQ.	MATL.	NOTES
MS2105-943	1	NUT PLATE	6	STEEL	
AN426AD-33	2	RIVET	12	2217-T4	AD

1	P1002-1	ALUM	.090	2024T3	A.D.C.
1	P1002-2	ALUM	.090	2024T3	A.D.C.
NO. PL. REQ.	PART NO.	MATL.	MATL. SPEC.	MANUFACTURER	
TOLERANCES UNLESS AS NOTED		REVISIONS		AVIATION DEVELOPMENT CORP., 1305 NW 200TH, Seattle Wa 98177	
		NO.	DATE	BY	
DECIMAL		1			
.05		2			
FRACTIONAL		3			
1/4		4			
ANGULAR		5			
		6			
		7			
		8			
		9			
		10			
		11			
		12			
		13			
		14			
		15			
		16			
		17			
		18			
		19			
		20			
		21			
		22			
		23			
		24			
		25			
		26			
		27			
		28			
		29			
		30			
		31			
		32			
		33			
		34			
		35			
		36			
		37			
		38			
		39			
		40			
		41			
		42			
		43			
		44			
		45			
		46			
		47			
		48			
		49			
		50			
		51			
		52			
		53			
		54			
		55			
		56			
		57			
		58			
		59			
		60			
		61			
		62			
		63			
		64			
		65			
		66			
		67			
		68			
		69			
		70			
		71			
		72			
		73			
		74			
		75			
		76			
		77			
		78			
		79			
		80			
		81			
		82			
		83			
		84			
		85			
		86			
		87			
		88			
		89			
		90			
		91			
		92			
		93			
		94			
		95			
		96			
		97			
		98			
		99			
		100			



NOTE:
BEND PART BEFORE INSTALLING NUT PLATE OR DRILLING LOWER RIVET HOLES SEE INSTRUCTIONS FOR DETAILS

PART'S LIST					
PART NO	PLCS	NAME	QTY	MATL	NOTE
MS21059L8	1	NUT PLATE	8	STEEL	
AN426AD-33	2	RIVET	16	2217-T9	AD

AVIATION DEVELOPMENT CORP				
1305 NW 200th Seattle Wa 98147				
LEFT PLATES				
1	P1001-1	ALUM	.090-2024T3	A.D.C.
1	P1001-2	ALUM	.090-2024T3	A.D.C.
NO PER	PART NO	MATL	MATL SPEC	MANUFACTURE
1	P1001-1	ALUM	.090-2024T3	A.D.C.
1	P1001-2	ALUM	.090-2024T3	A.D.C.
TOLERANCES	REVISIONS			
(EXCEPT AS NOTED)	NO.	DATE	BY	
DECIMAL	1			
± .05	2			
FRACTIONAL	3			
± 1/64	4			
ANGULAR	5			
	6			
DRAWN BY		SCALE	MATERIAL	
GHN		FULL	.090-2024T3	
DATE		12/2/69	DRAWING NUMBER	
TRACED		2/1/70	P1001	